

Once upon a time, there was a Little
Prince that lived in a planet.
One day he decided to visit other
planets ...





Hospital: CH Fontainebleau
Hostess: M. Olivier Ovaguimian
HOPE visitor: Casademont Pou, Rosa

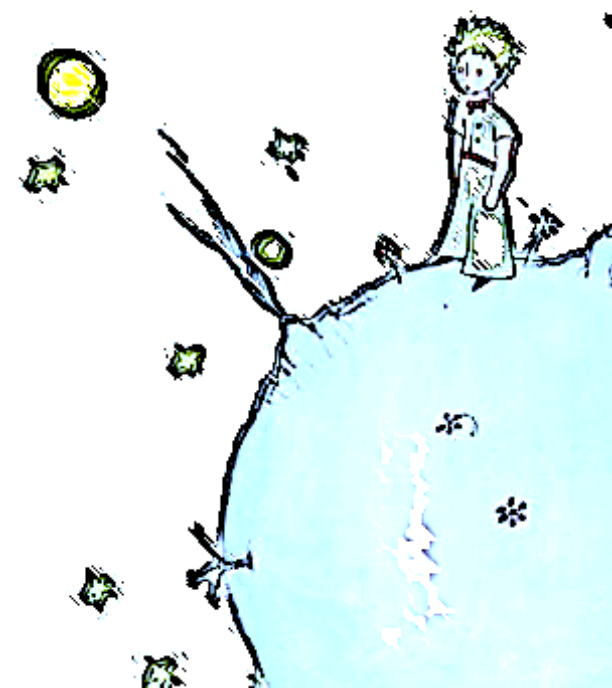


**CENTRE HOSPITALIER
DE FONTAINEBLEAU**
55 Bd Maréchal Joffre
77300 FONTAINEBLEAU
Tél : 01 60 74 10 10





Hospital: CHU-Toulouse
Hostess: M. J Bredent
HOPE visitor: Franco Vidal, Amalia





Hospital: Centre Hospitalier Douarnenez.

Hostess: Mme Nicolas, Sonia.

HOPE visitor: García Suárez, Eva.

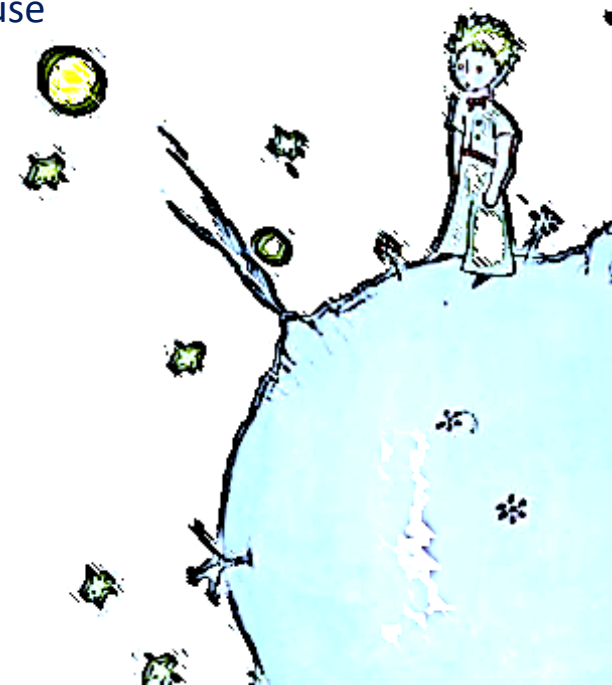


Centre
Hospitalier
Douarnenez





Hospital: Groupe Hospitalière Mulhouse
Hostess: Blumentritt Thomas
HOPE visitor: Gasalla José M.



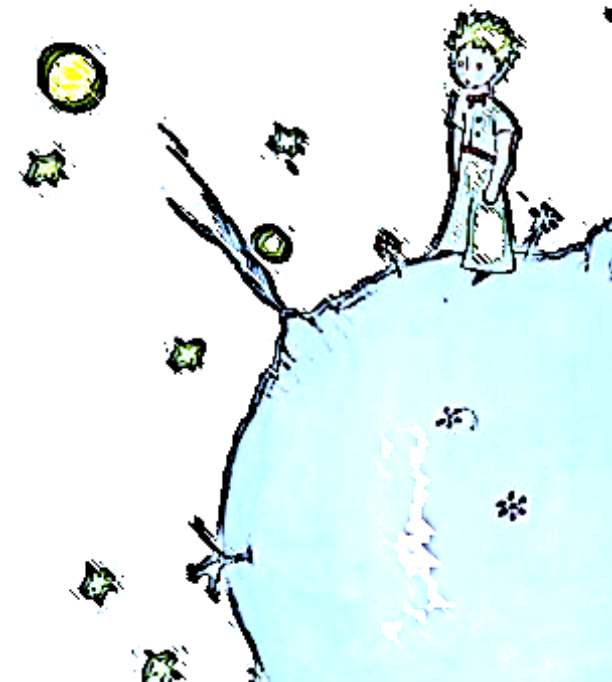


Hospital: CHU ANGERS
Hostess: Thomas, Alexis
HOPE Visitor: Hernandez, Monica





Hospital: Centre Jean Perrin
HOPE visitor: Kuruc, Darija





Hospital: Centre Hospitalier de Melun

Hostess: Mme. N. Coquin

HOPE visitor: Martínez Gimeno, Antonio

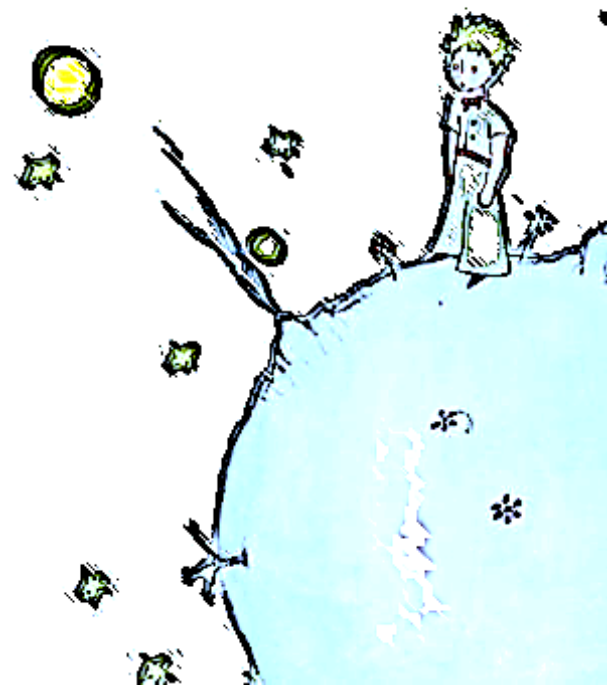


CENTRE HOSPITALIER
Marc Jacquet
de Melun





Hospital: CH Jacques Coeur (Bourges)
Hostess: Kouam, Pierre
HOPE visitor: Moliner, M Concepcion



After visiting all those planets, he thought...

Which three innovations could I bring home?



Firstly,

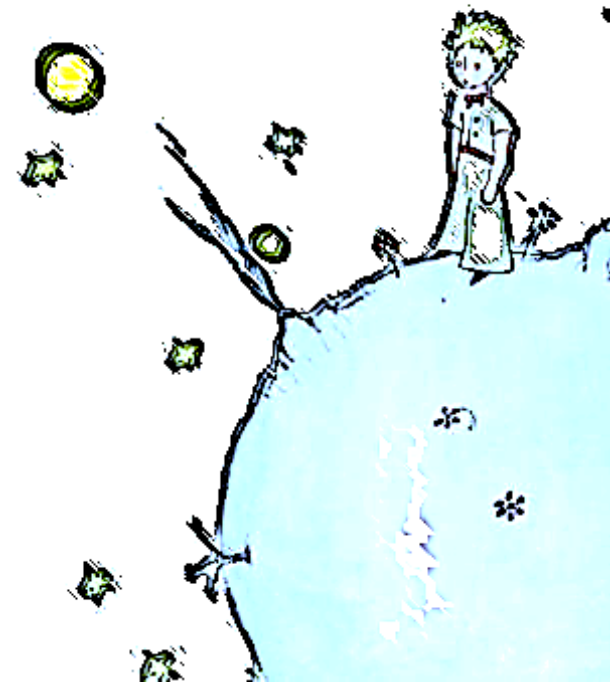
medical desert

.....and a lot of little hospitals



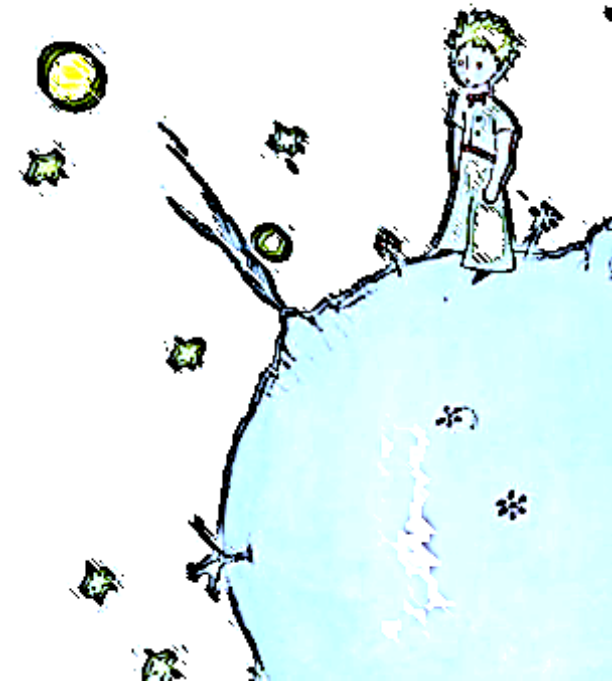
Groupe Hospitalier de Territoire (GHT)

(Territorial Hospital Group)



GHT: Values

- **Public service**
- **Continuity** of care
- **Equal access** to care and prevention activities
- Respect to **freedom choice** and **users' rights**
- **Resiliency** and project adaptation to different challenges
- **Research** of **excellence** and **quality improvement**



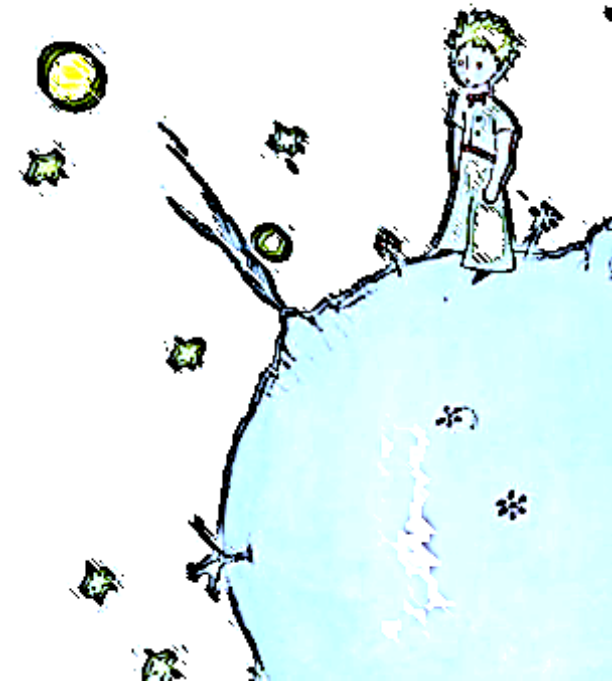
GHT Aims

- To ensure all patients in **territory equal access to care 24/24** by consolidating and developing the public health care provision as part of **graduated combining proximity and security organizations**
- To offer patients **comprehensible, coherent and coordinated care pathways** through the territory
- Together, to be **attractive** to both **patients** and health care **professionals**.



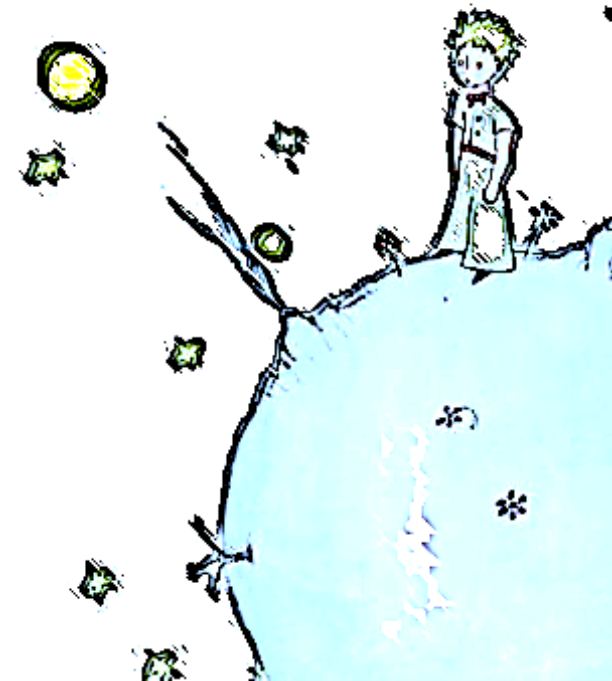
GHT Aims

- To develop a **shared medical project** with the aim to **improve continuously performance** of member institutions
- To develop a plan to answer **the medical jobs needs**, in a jointly form with health university
- To create a **shared technical platform**



Secondly....

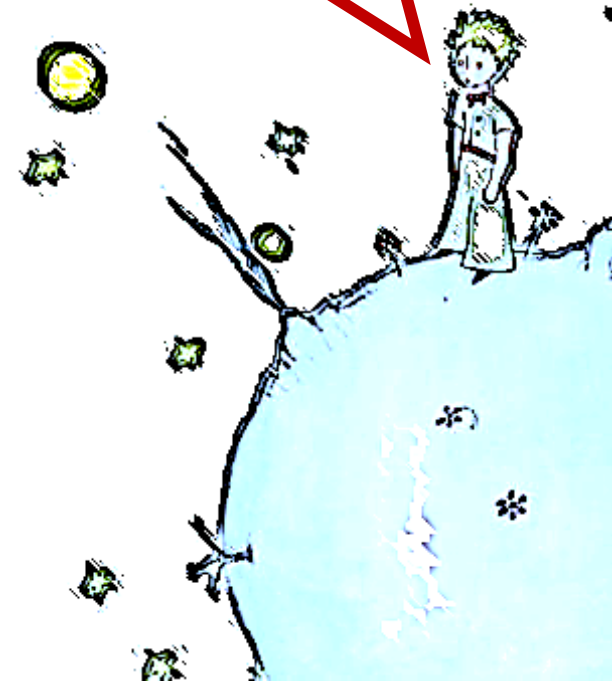
Continuous Medical Education



MEDICAL SIMULATION FOR ELDERLY DISABLED PEOPLE



“Get into the patient skin”

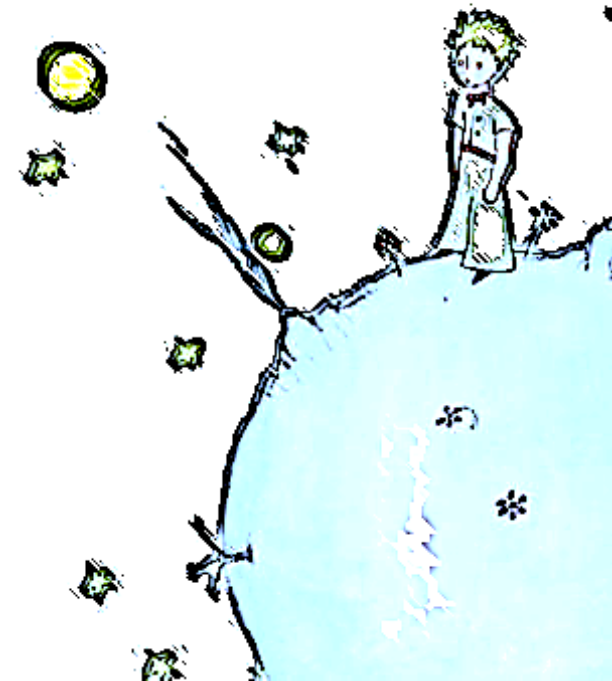


Therapeutical education certification – DPC- in pediatrics care:Diabetes and Asthma



DIABETES:
Personalized
game

ASTHMA: Playing
at doll's house

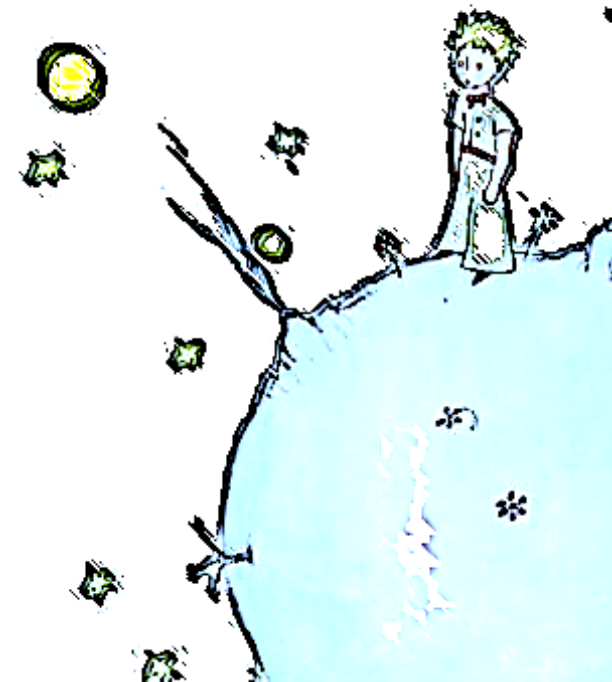


Thirdly....

Disability Care

→ Auto-questionnaire FIND
(Cesari et al. PLoS One, 2014; 9 (7):e101745)

Domaine	Questions	Réponses	Score
Dépendance	A. Avez-vous des difficultés à marcher 400 mètres (environ un tour d'un terrain de foot ou 2 - 3 bâtiments) ?	a. Peu ou pas de difficultés b. Beaucoup de difficultés ou incapacité	0 1
	B. Avez-vous des difficultés à monter un escalier (environ 10 marches) ?	a. Peu ou pas de difficultés b. Beaucoup de difficultés ou incapacité	0 1
Fragilité	C. Au cours de l'année passée, avez-vous perdu plus de 4,5 kg involontairement ?	a. Non b. Oui	0 1
	D. La semaine passée, combien de fois avez-vous ressenti les états suivants : « tout ce que je faisais me demandait un effort » ou « je ne pouvais pas aller de l'avant » ?	a. Rarement ou parfois (2 fois ou moins par semaine)	0
		b. Souvent ou la plupart du temps (plus de 3 fois par semaine)	1
	E. Quel est votre niveau actuel d'activité physique ?	a. Activité physique régulière (au moins 2 à 4 heures par semaine)	0
		b. Aucune activité physique ou rarement (quelques promenades ou sorties pour aller faire des courses)	1



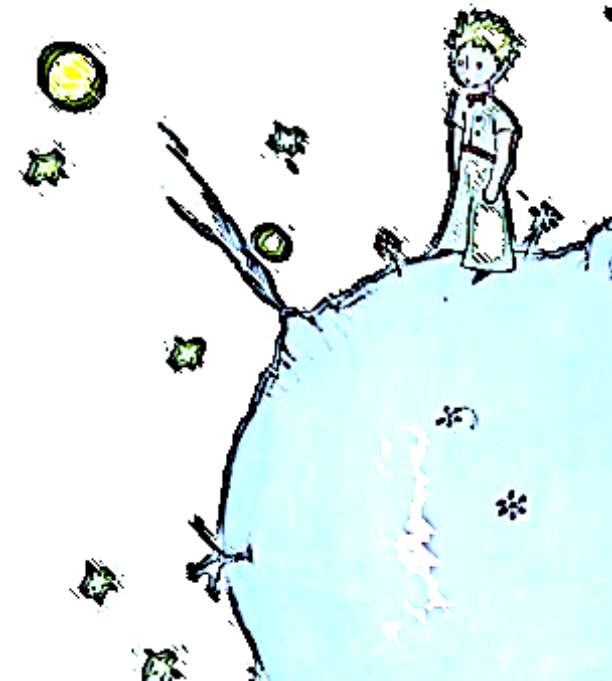
ATTENTION TO DISABLED PATIENTS

Elderly people

- **Dependence prevention**
 - Frailty detection.
 - Avoid iatrogenic dependency.
- **Treatment**
 - **Technologic innovations**
 - (Telemedicine)
 - **Health intervention gradation**
 - From home to hospital

Psychiatric patients

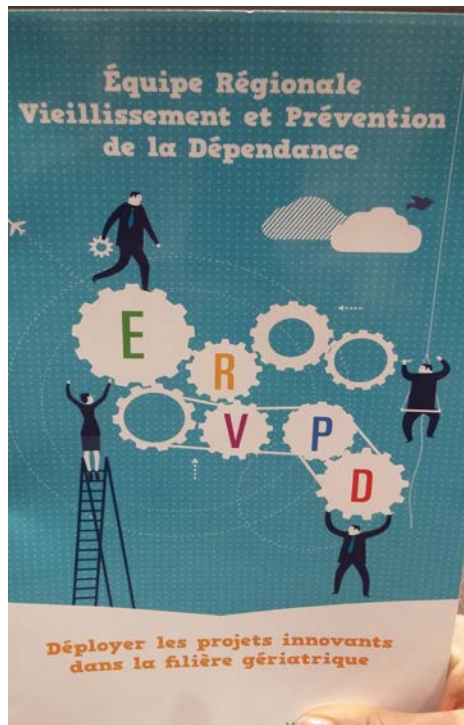
- Social integration
- Help by work



INTEGRATED INNOVATION IN HEALTH CARE IN ELDERLY PATIENTS PROJECT

PROJECT → DEPENDENCE PREVENTION

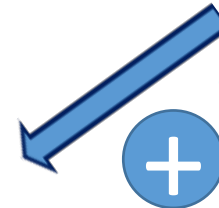
FRAILTY SCREENING → SELF-QUESTIONNAIRE OVER 75 YEARS OLD



EVALUATION BY SPECIALISED NURSE



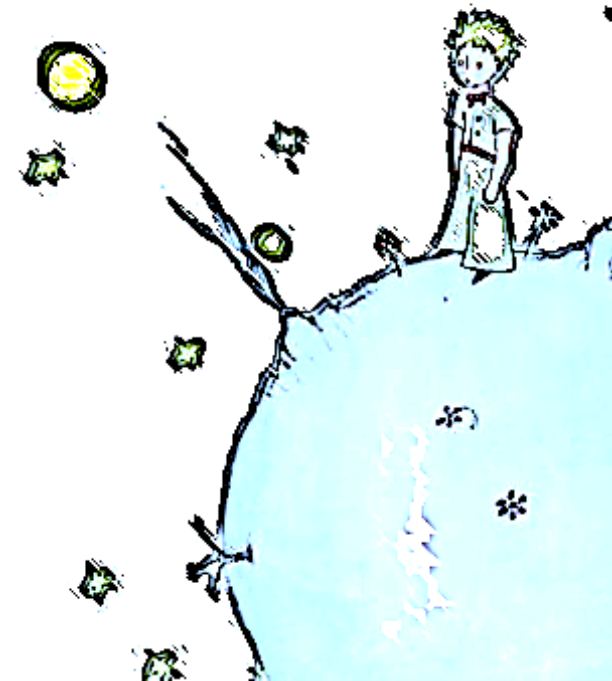
HEALTH PROMOTION COMMUNITY PROGRAMS
MEMORY, PHYSICOMOTRICITY AND NUTRITION
WORK SHOPS



DISABLED PSYCHIATRIC PATIENTS SUPPORT PROJECT



- Aim: Integration
 - Centers providing care through *employment*.
 - **Partnership** between hospital and non profit association.
 - Located in hospital territory.
 - **Remunerated job**.
 - Medical and psychosocial support.
 - **Self –sustainability and volunteers programme.**





Then he went home.... And
changed his planet!!!!

Territorial Hospital Group
Continuous Medical Education
Disability Care





*Casademont Pou, Rosa M.
Franco Vidal, Amalia
Garcia Suarez, Eva
Gasalla Herraiz, José Manuel
Hernandez Herrero, Mónica
Kuruc, Darija
Martinez Gimeno, Antonio
Moliner Robredo, M^a C.*

