



„Hospital 2020: Hospitals of the future, Healthcare of the future.“



Fotocredit: www.bing.com

G8 goes to Hospital 2020



And those **G8** are ...

Diaz Calvet, Montserrat

Katsimente, Kyriaki

Kessler, Sonja

Mirambeau, Claire

Pataky, Erica

Piirainen, Paula

Stojic, Dusan

Zaraj, Manuela

Navarra Hospital Pamplona, Spain

Evangelismos General Hospital, Athen, Greece

Wiener Krankenanstaltenverbund, Vienna, Austria

CHU Poitiers, France

PSI Vienna, Austria

Päijät Häme Social and Healthcare Group, Lahti, Finland

General Hospital Pencevo, Serbia

Otto-Wagner-Spital Vienna, Austria

G8 goes to Hospital 2020



Our hospitals are:

St. Elisabeth Gruppe in Herne

Pfalzkllinikum fuer Psychiatrie und Neurologie

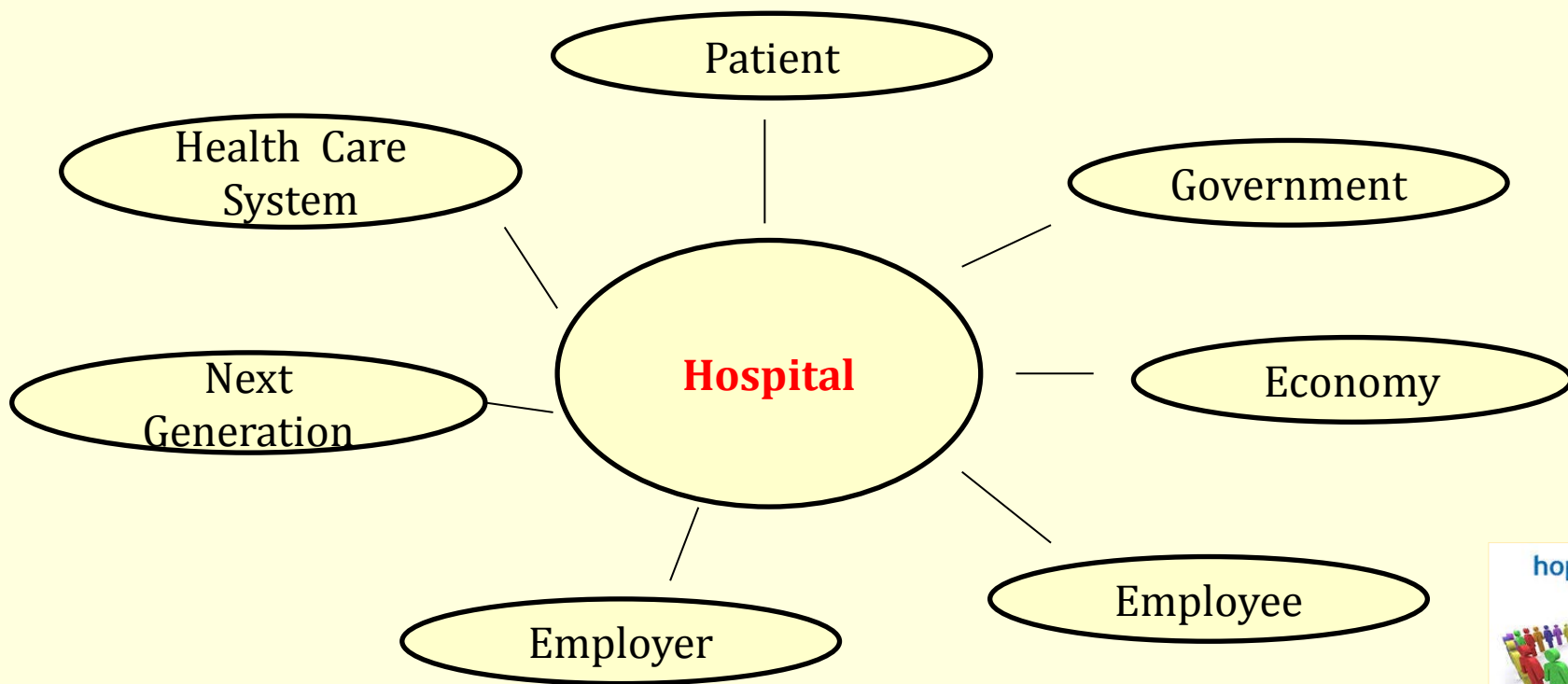
St. Lukas Gesellschaft in Dortmund

Augusta Viktoria klinikum in Bad Oeyenhausen

Alb Fils Klinik in Göppingen

LVR Klinik Langenfeld

Why and for whom is it necessary to have **attractive Hospitals?**



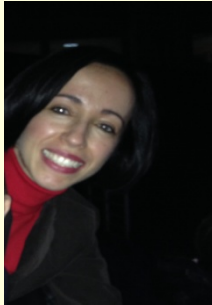


What do the next generation employees expect from their employers?

Requirements

1. Familyfriendly Hospital
2. Public Relation – Jobmarketing
3. Different working hour models





What do the employers offer to the Generation Y?

**Familyfriendly Hospital
Project „Erfolgsfaktor Familie“
LVR Hospitals**

Assistance by finding childcare or family members in need of case (Nanny, Au-Pair,...)



What do the employers offer to the Generation Y?



Example for Public Relation - Jobmarketing



What do the employers offer to the Generation Y?

Example for **different working hour models**



Arbeitszeitemodelle OP Pflege

Schichtmodell	Wunschdienst	Ausfallzeitart																	
ZZ01	OV1	OV2	OV3	OV4	OV5	OV6	OV7	OV8	OG1	OG2	OZ1	OZ2	OG3	OG4	OG5	OG6	OG7	OG8	
OV1	7:30-16:00																		
OV2	12:45-17:03	Arbeitszeit 12:45-20:30	BD 20:30-7:30	Arbeitszeit 7:30-13:02															
OV3	11:42-13:00	Arbeitszeit 11:42-20:30	BD 20:30-8:00																
OV4	7:45-12:00	Arbeitszeit 7:45-12:30 (30Min Pause)	BD 12:30-8:00																Samstag
OV5	7:45-20:15	BD																	Sonntag Tag
OV6	20:00-13:30	BD 20:00-7:30	Arbeitszeit 7:30-15:30																Sonntag Nacht
OV7	7:30-13:39	Arbeitszeit 75%																	
OV8	11:30-20:18	Arbeitszeit Spätdienst																	
OV9	7:45-11:45	BD Sonn-Feiertag																	
OG1	7:00-15:12	Steriler Kern																	
OG2	8:00-16:12	Steriler Kern																	
OZ1	7:30-15:36	Lagerung																	
OZ2	8:00-16:06	Lagerung																	
O10	7:45-20:15	Arbeitszeit 7:45-12:30 (30Min) Pause	BD 12:30-20:15																Samstag
O11	20:00-20:00	BD																	Samstag bis Sonntag
O12	19:45-15:30	BD 19:45 bis 7:30	Arbeitszeit: 7:30 bis 15:30																Sonntag bis Montag
AOF	7:30-18:00	Flex																	



How to be an attractive Hospital?



Service improvement with new professionals

- Green Ladies
- Menue Assistants

Offer of Complementary Medicine

- Animal Therapy
- Colour Therapy
- Aroma Therapy



“The journey is the reward”

Confucius

